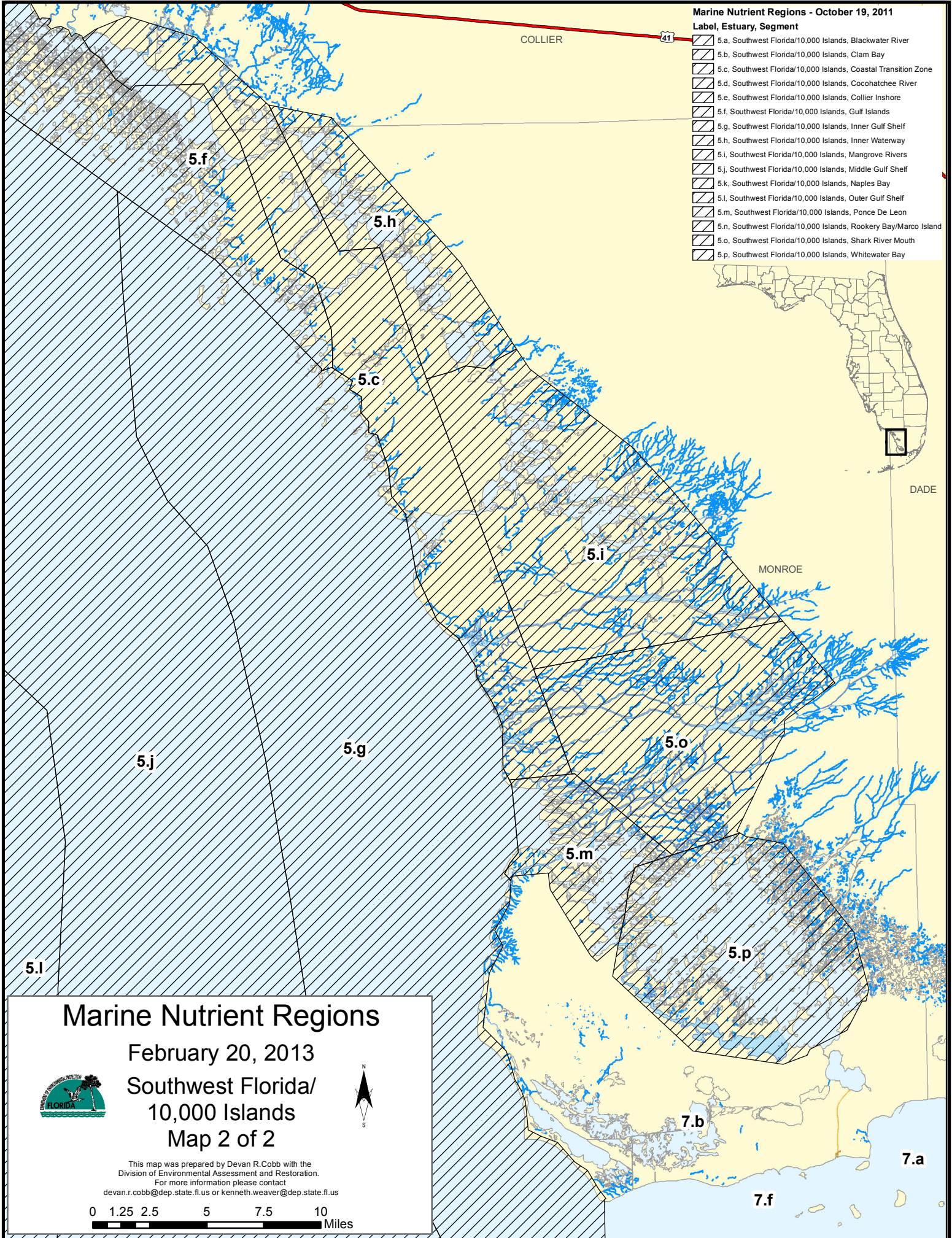


Marine Nutrient Regions - October 19, 2011

Label, Estuary, Segment

- 5.a, Southwest Florida/10,000 Islands, Blackwater River
- 5.b, Southwest Florida/10,000 Islands, Clam Bay
- 5.c, Southwest Florida/10,000 Islands, Coastal Transition Zone
- 5.d, Southwest Florida/10,000 Islands, Cocohatchee River
- 5.e, Southwest Florida/10,000 Islands, Collier Inshore
- 5.f, Southwest Florida/10,000 Islands, Gulf Islands
- 5.g, Southwest Florida/10,000 Islands, Inner Gulf Shelf
- 5.h, Southwest Florida/10,000 Islands, Inner Waterway
- 5.i, Southwest Florida/10,000 Islands, Mangrove Rivers
- 5.j, Southwest Florida/10,000 Islands, Middle Gulf Shelf
- 5.k, Southwest Florida/10,000 Islands, Naples Bay
- 5.l, Southwest Florida/10,000 Islands, Outer Gulf Shelf
- 5.m, Southwest Florida/10,000 Islands, Ponce De Leon
- 5.n, Southwest Florida/10,000 Islands, Rookery Bay/Marco Island
- 5.o, Southwest Florida/10,000 Islands, Shark River Mouth
- 5.p, Southwest Florida/10,000 Islands, Whitewater Bay



# Marine Nutrient Regions

February 20, 2013

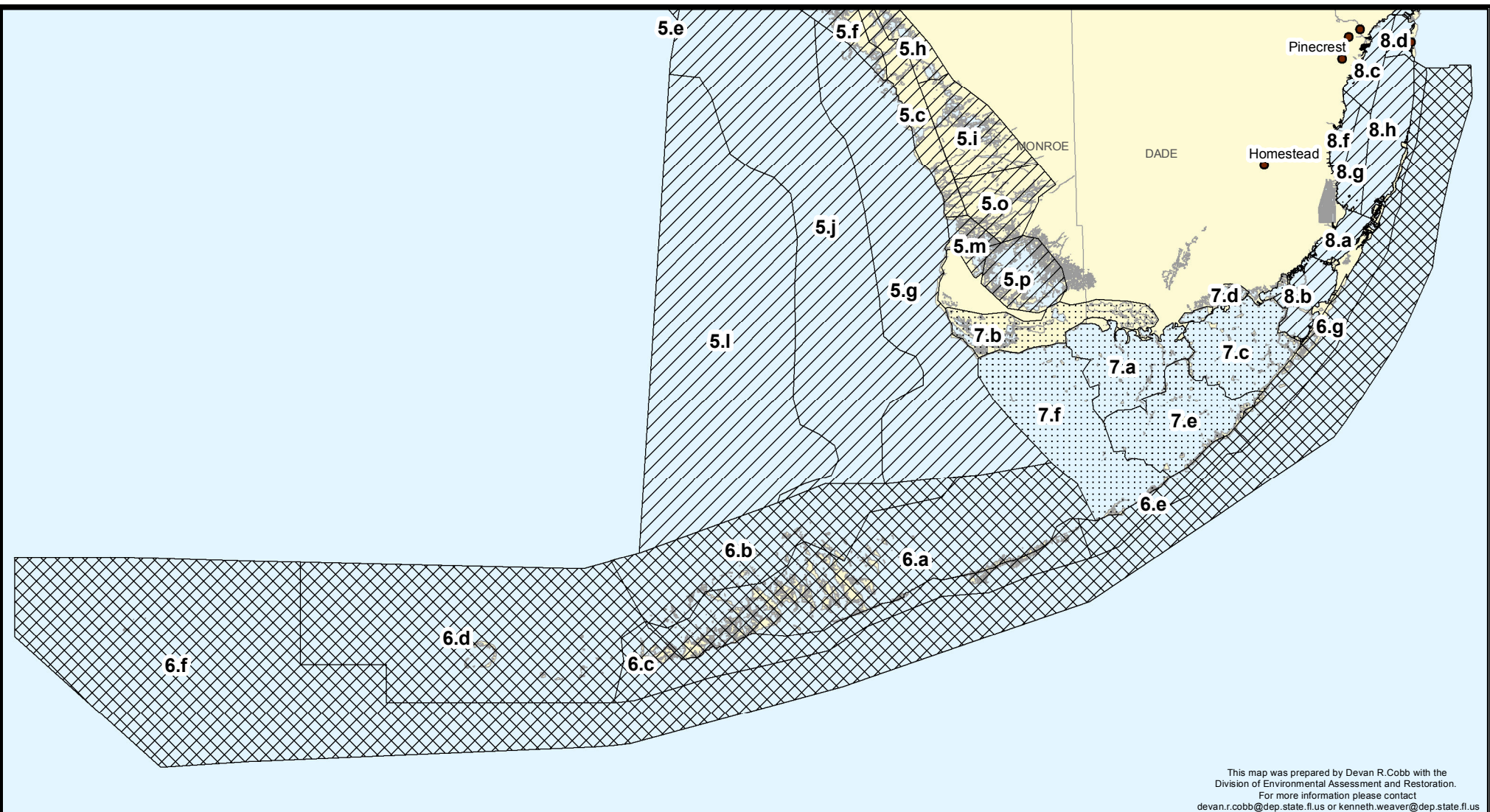
Southwest Florida/  
10,000 Islands  
Map 2 of 2



This map was prepared by Devan R.Cobb with the  
Division of Environmental Assessment and Restoration.  
For more information please contact  
devan.r.cobb@dep.state.fl.us or kenneth.weaver@dep.state.fl.us

0 1.25 2.5 5 7.5 10 Miles





This map was prepared by Devan R. Cobb with the Division of Environmental Assessment and Restoration. For more information please contact devan.r.cobb@dep.state.fl.us or kenneth.weaver@dep.state.fl.us

**Marine Nutrient Regions - October 19, 2011**

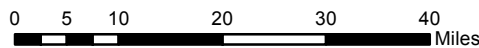
**Label, Estuary, Segment**

- |  |   |  |   |
|--|---|--|---|
|  | 5.a, Southwest Florida/10,000 Islands, Blackwater River         |  | 6.c, Keys, Lower Keys                       |
|  | 5.b, Southwest Florida/10,000 Islands, Clam Bay                 |  | 6.d, Keys, Marquesas                        |
|  | 5.c, Southwest Florida/10,000 Islands, Coastal Transition Zone  |  | 6.e, Keys, Middle Keys                      |
|  | 5.d, Southwest Florida/10,000 Islands, Cocohatchee River        |  | 6.f, Keys, Oceanside                        |
|  | 5.e, Southwest Florida/10,000 Islands, Collier Inshore          |  | 6.g, Keys, Upper Keys                       |
|  | 5.f, Southwest Florida/10,000 Islands, Gulf Islands             |  | 7.a, Florida Bay, Central Florida Bay       |
|  | 5.g, Southwest Florida/10,000 Islands, Inner Gulf Shelf         |  | 7.b, Florida Bay, Coastal Lakes             |
|  | 5.h, Southwest Florida/10,000 Islands, Inner Waterway           |  | 7.c, Florida Bay, East Central Florida Bay  |
|  | 5.i, Southwest Florida/10,000 Islands, Mangrove Rivers          |  | 7.d, Florida Bay, Northern Florida Bay      |
|  | 5.j, Southwest Florida/10,000 Islands, Middle Gulf Shelf        |  | 7.e, Florida Bay, Southern Florida Bay      |
|  | 5.k, Southwest Florida/10,000 Islands, Naples Bay               |  | 7.f, Florida Bay, Western Florida Bay       |
|  | 5.l, Southwest Florida/10,000 Islands, Outer Gulf Shelf         |  | 8.a, Biscayne Bay, Card Sound               |
|  | 5.m, Southwest Florida/10,000 Islands, Ponce De Leon            |  | 8.b, Biscayne Bay, Manatee Bay-Barnes Sound |
|  | 5.n, Southwest Florida/10,000 Islands, Rookery Bay/Marco Island |  | 8.c, Biscayne Bay, North Central Inshore    |
|  | 5.o, Southwest Florida/10,000 Islands, Shark River Mouth        |  | 8.d, Biscayne Bay, North Central Outer-Bay  |
|  | 5.p, Southwest Florida/10,000 Islands, Whitewater Bay           |  | 8.e, Biscayne Bay, Northern North Bay       |
|  | 6.a, Keys, Back Bay   |  | 8.f, Biscayne Bay, South Central Inshore    |
|  | 6.b, Keys, Backshelf  |  | 8.g, Biscayne Bay, South Central Mid-Bay    |
|  |   |  | 8.h, Biscayne Bay, South Central Outer-Bay  |
|  |   |  | 8.i, Biscayne Bay, Southern North Bay       |

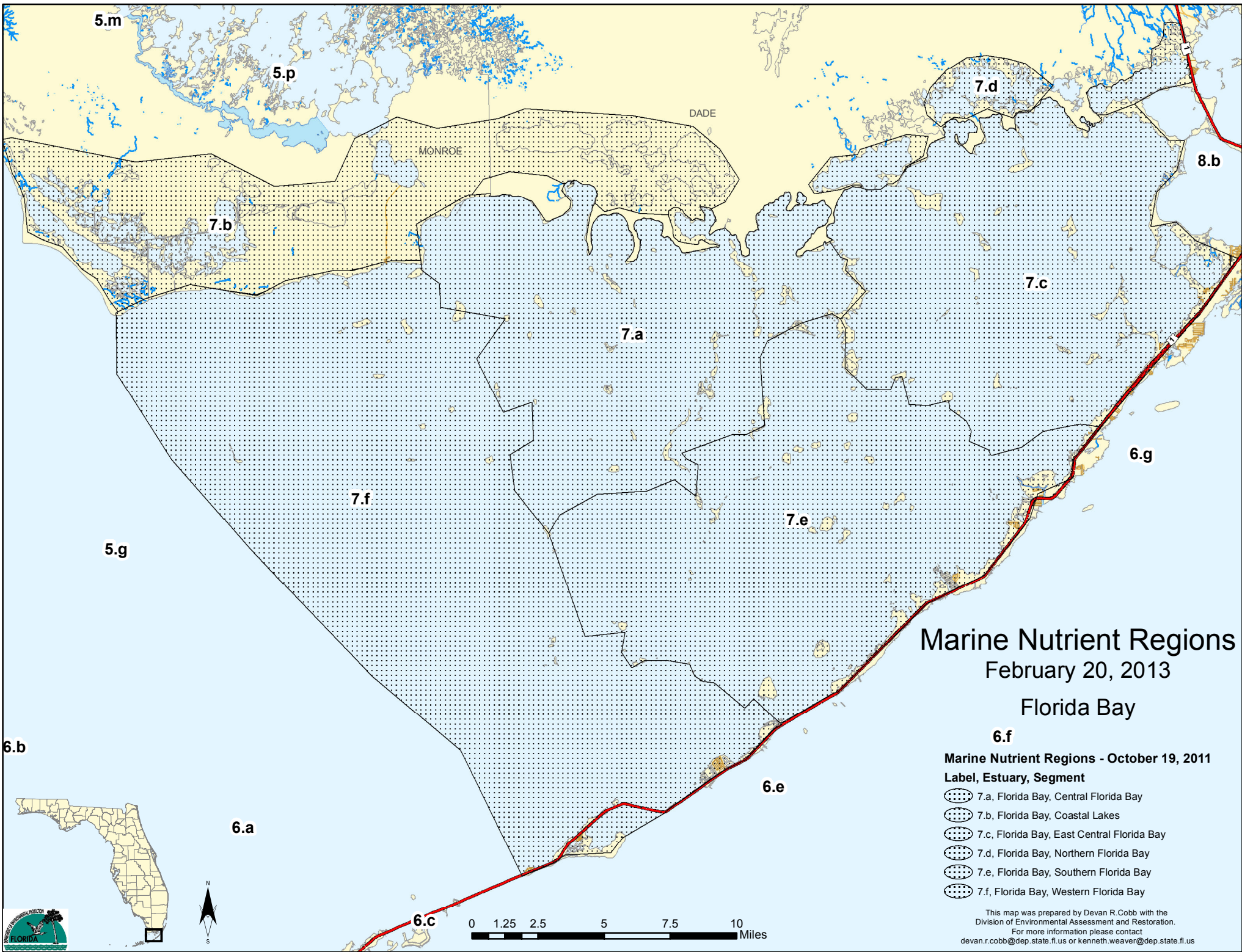
# Marine Nutrient Regions

February 20, 2013

## Keys







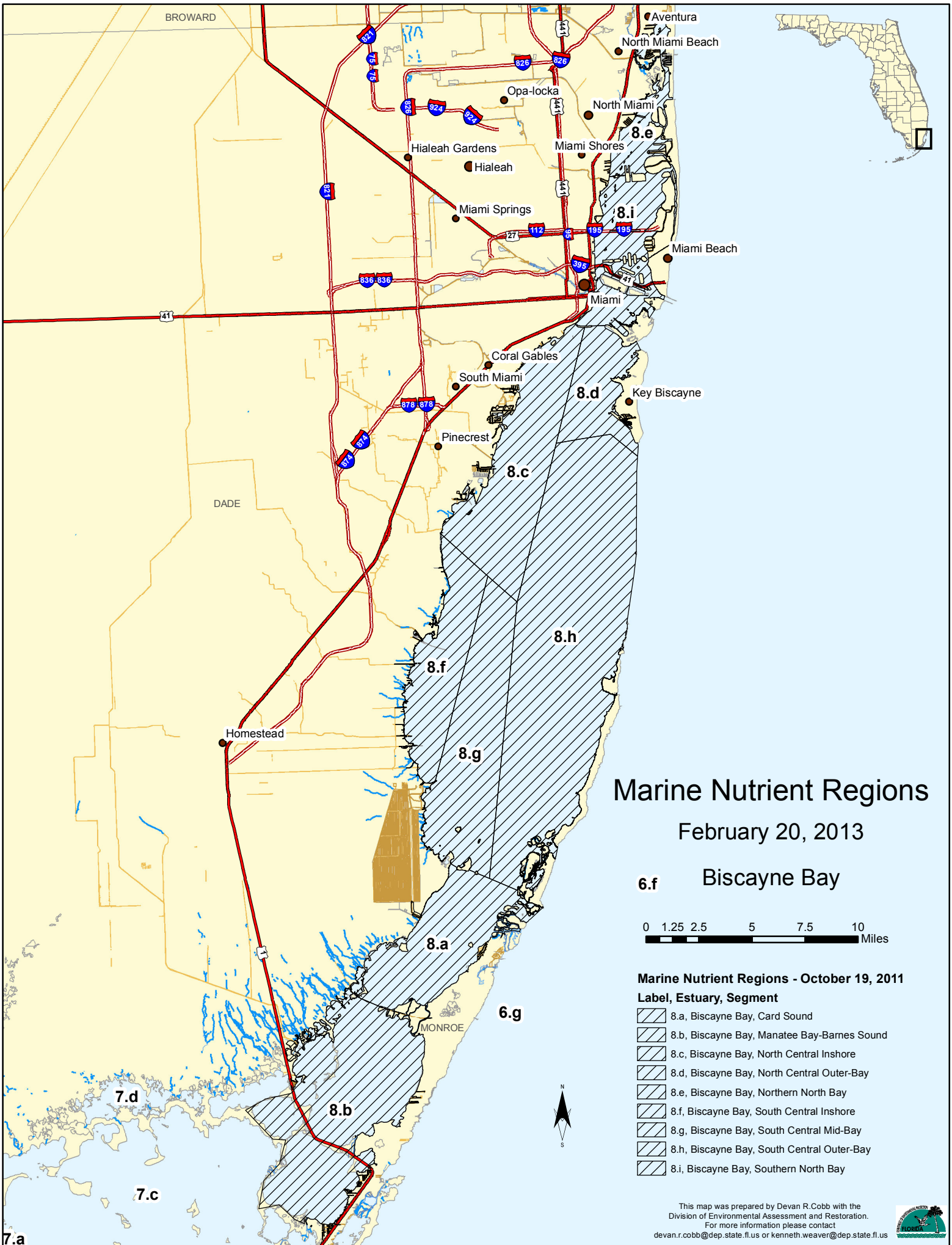
# Marine Nutrient Regions

February 20, 2013

## Florida Bay

- 6.f**
- Marine Nutrient Regions - October 19, 2011**
- Label, Estuary, Segment**
- 7.a, Florida Bay, Central Florida Bay
  - 7.b, Florida Bay, Coastal Lakes
  - 7.c, Florida Bay, East Central Florida Bay
  - 7.d, Florida Bay, Northern Florida Bay
  - 7.e, Florida Bay, Southern Florida Bay
  - 7.f, Florida Bay, Western Florida Bay

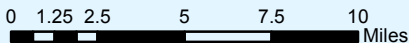
This map was prepared by Devan R.Cobb with the Division of Environmental Assessment and Restoration. For more information please contact devan.r.cobb@dep.state.fl.us or kenneth.weaver@dep.state.fl.us



# Marine Nutrient Regions

February 20, 2013

## 6.f Biscayne Bay



### Marine Nutrient Regions - October 19, 2011

- | Label, Estuary, Segment                     | Pattern             |
|---|---------------------|
| 8.a, Biscayne Bay, Card Sound               | [Diagonal hatching] |
| 8.b, Biscayne Bay, Manatee Bay-Barnes Sound | [Diagonal hatching] |
| 8.c, Biscayne Bay, North Central Inshore    | [Diagonal hatching] |
| 8.d, Biscayne Bay, North Central Outer-Bay  | [Diagonal hatching] |
| 8.e, Biscayne Bay, Northern North Bay       | [Diagonal hatching] |
| 8.f, Biscayne Bay, South Central Inshore    | [Diagonal hatching] |
| 8.g, Biscayne Bay, South Central Mid-Bay    | [Diagonal hatching] |
| 8.h, Biscayne Bay, South Central Outer-Bay  | [Diagonal hatching] |
| 8.i, Biscayne Bay, Southern North Bay       | [Diagonal hatching] |

This map was prepared by Devan R.Cobb with the Division of Environmental Assessment and Restoration. For more information please contact devan.r.cobb@dep.state.fl.us or kenneth.weaver@dep.state.fl.us

